

QUICK EXHAUST VALVES

**ACCESSORIES
PNEUMATIC DISTRIBUTORS**



Quick exhaust valves SR are used to exhaust the pressure of the chambers of a pneumatic cylinder directly into the atmosphere, growing the speed of the cylinder to the maximum. They have the body and the components in anodized aluminium, NBR seals and they are available with versions from 1/8" to 1".

TECHNICAL DATA

CONSTRUCTIVE FEATURES

Fluid	Filtered air
Operating pressure	1 ÷ 10 bar
Temperature range	-10°C ÷ +70°C
Materials	Body and components in anodized aluminium, seals NBR

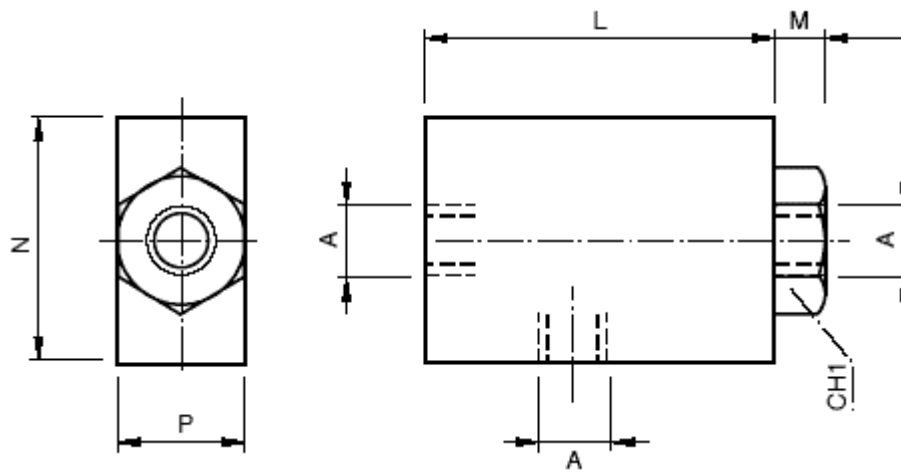
RANGE

Port	Model
1/8"	SR-8
1/4"	SR-4
1/2"	SR-2
1"	SR-1

TECHNICAL DATA

Port	1/8"	1/4"	1/2"	1"
Flow rates at 6 bar NI/min.	620	1350	3880	16000
Flow rates with open exhaust NI/min.	980	2100	5400	19000
Weight (g)	51	96	332	1000

DIMENSIONS



PORT A	L	M	N	CH1	P
1/8"	35	4	23	16	18
1/4"	42	4	32	23	25
1/2"	62	7	50	38	40
1"	100	10	80	50	60

