

PNEUMO-HYDRAULICS UNITS

CYLINDERS WITH HYDRAULIC CONTROL SERIES UCR

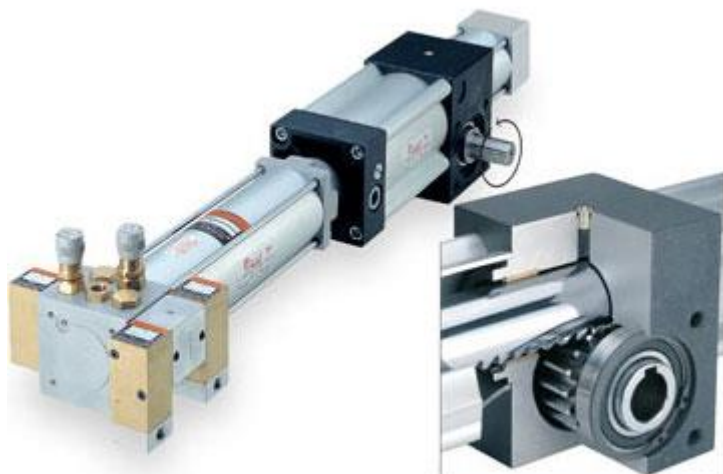
The UCR groups are devices consisting of three elements :

1. The US series units with different combination.

2. Connecting interface.

3. Pinion gear-rack that transforms the straight way motion into rotary motion with set rotary angles.

AVAILABLE REGULATIONS : as for US units, both in thrusting and in pulling, available functions of adjusted stroke, of SKIP and STOP valves.



RANGE

BORES and STROKES

BORE	Deceleration angle Y	Stroke for rotation of 10mm	Weight Kg		
			96°	186°	366°
50	40	3.5	2,3	2.7	3.5
80	40	4.7	4.6	5.1	6.1
100	40	6.5	7	7.6	8.8
125	35	6.5	7.8	8.8	10.8

CONSTRUCTIVE OPTIONS

VERSION STANDARD OR MAGNETIC

TECHNICAL DATA

Pressure max: 7 bar

Fluid: filtered air with or without lubrication

Temperature range: -20°C; +70°C

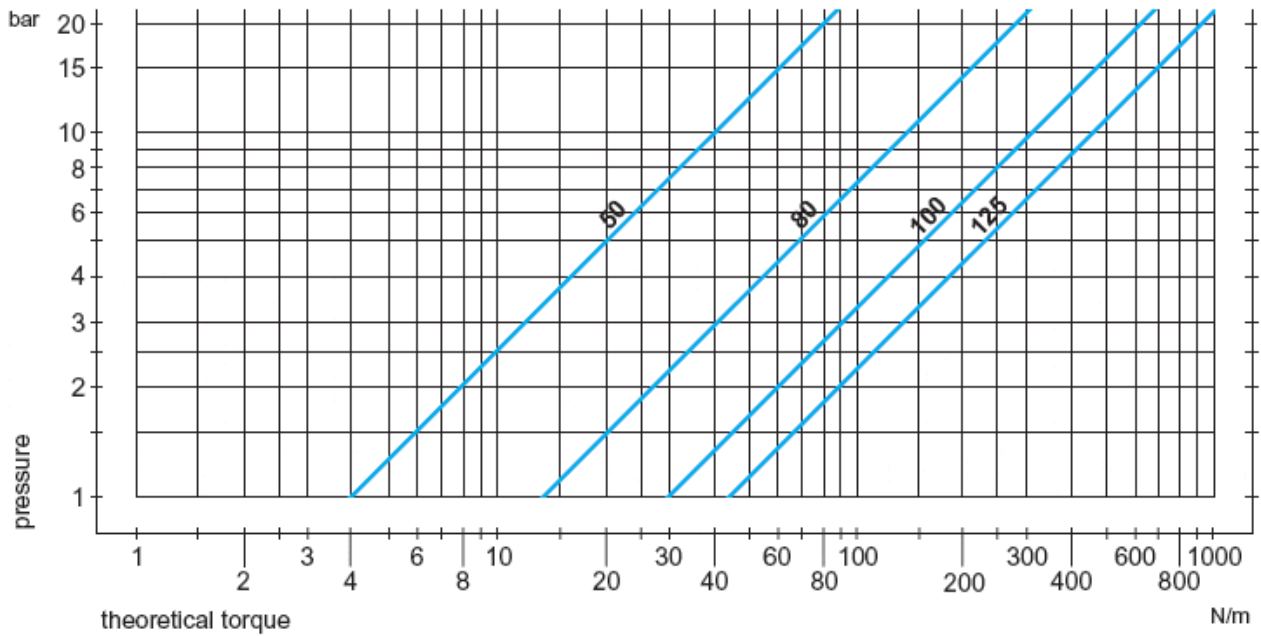
CONSTRUCTIVE FEATURES

- Unit US standard
- Connection interface in anodized aluminium and cadmium plated steel
- Pinion gear-rack group in C40 UNI 2954 steel
- Central body in aluminium and bush for the rack guide

- Pinion mounted on ball bearings

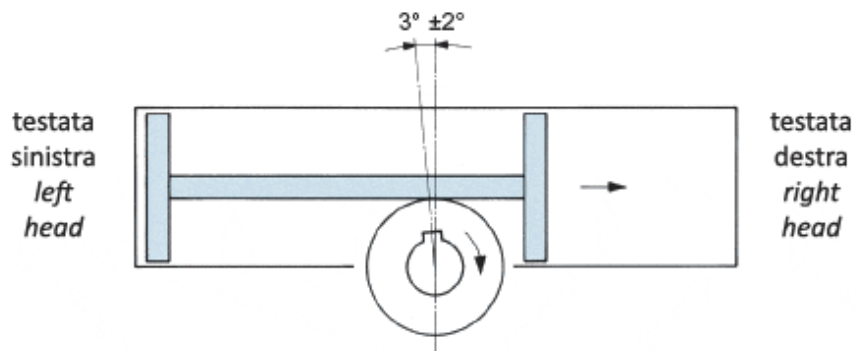
THRUST FORCES

DIAGRAM OF THE TORQUE MOMENT

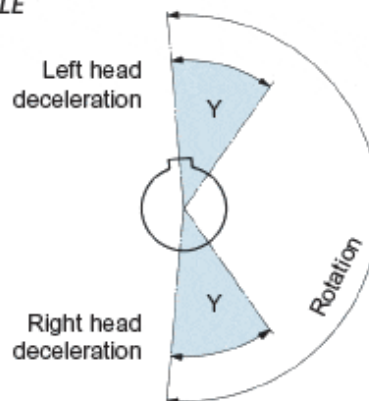


ROTATIONS DIAGRAM

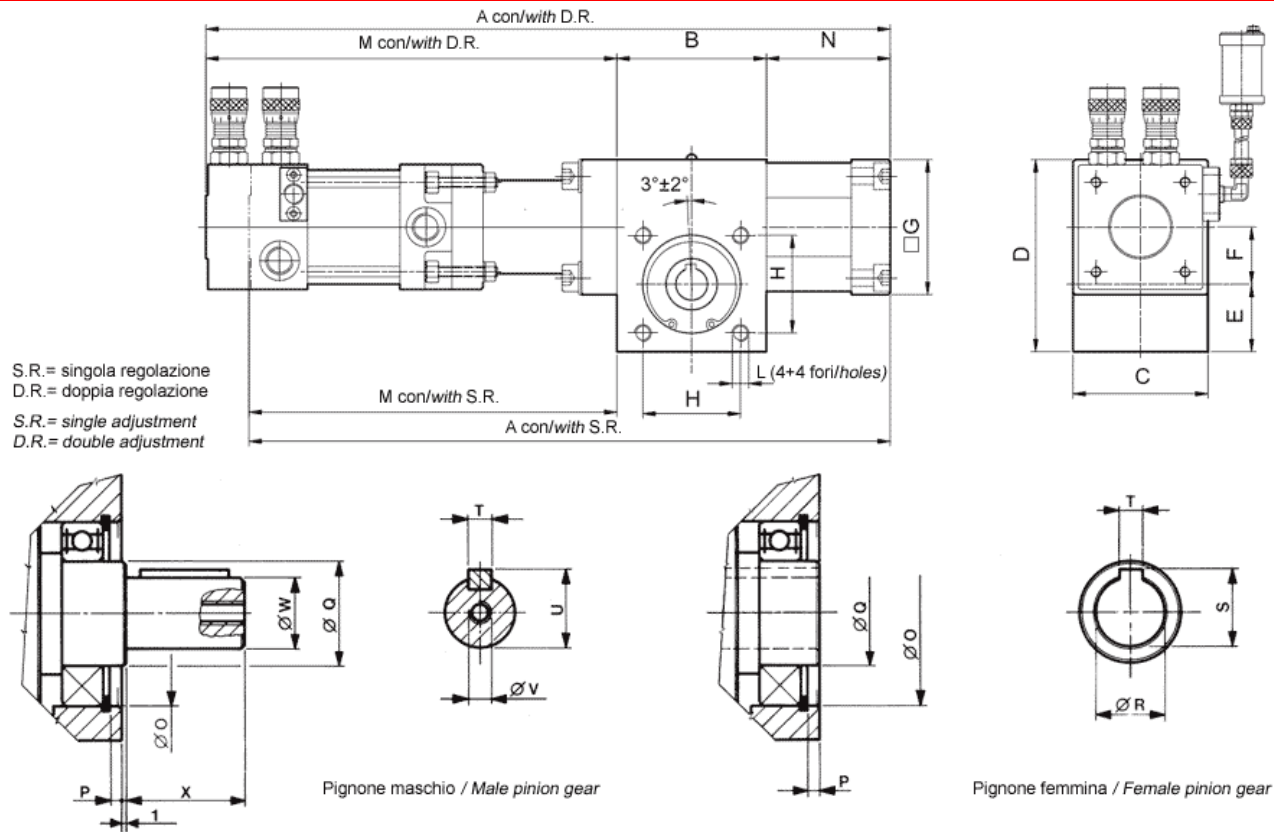
POSIZIONE INIZIALE CON PIGNONE MASCHIO O FEMMINA
INITIAL POSITION WITH MALE AND FEMALE PINION GEAR



ANGOLO DI DECELERAZIONE
DECELERATION ANGLE



DIMENSIONS



Ø mm	A ± 1,5						B	C	D	E	F	G	H ± 0,15	L	M						N			Q K6	R H7	S	T	U	V	W h6	X
	96°		186°		366°										96°		186°		366°		96°	186°	366°								
	SR	DR	SR	DR	SR	DR									SR	DR	SR	DR	SR	DR	SR	DR	SR								
50	388	-	483	-	672	-	72	65	92,5	32,5	27,5	65	47	M8x14	262	-	325,5	-	451,5	-	54	85,5	148,5	25	15	17,2	5	18	M5x15	16	30
80	584	606	761,5	783,5	1114,5	1136,5	93	95	126	42,5	36	95	62	M10x16	321	343	406	428	575,5	597,5	72,5	115	200,5	35	24	27,2	8	27	M8x20	24	40
100	580,5	602,5	757,5	779,5	1110,5	1132,5	128	140	186,5	64	52,5	115	90	M14x24	358,5	380,5	476,5	498,5	711,5	733,5	94	153	271	55	35	38,7	10	38,5	M12x20	35	50
125	586	608	763	785	1116	1138	128	140	186,5	64	52,5	140	90	M14x24	360	382	478	500	713	735	98	157	275	55	35	38,7	10	38,5	M12x20	35	50

