



Special pneumatic cylinders/actuators.
Examples of projects realized.



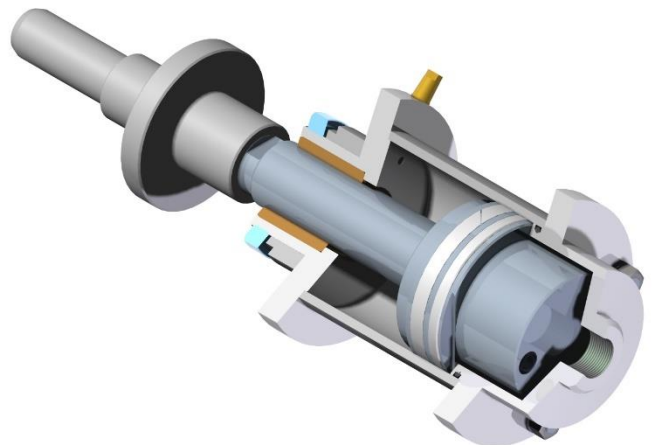
Cylinders totally special, according Customer design



Compact cylinder \varnothing 80 mm. stroke 15 mm., double acting, piston rod \varnothing 50 mm. with internal through hole \varnothing 35 mm., magnetic piston.



Round cylinder with screwed caps, \varnothing 220 mm. stroke 100 mm., caps in chemical nickel plated aluminium, rear cap with integrated hinge, tube in nickel plated brass with epoxy painting, piston rod in stainless steel AISI 304.



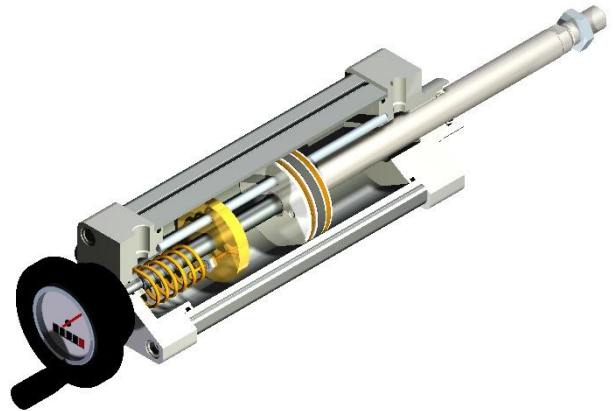
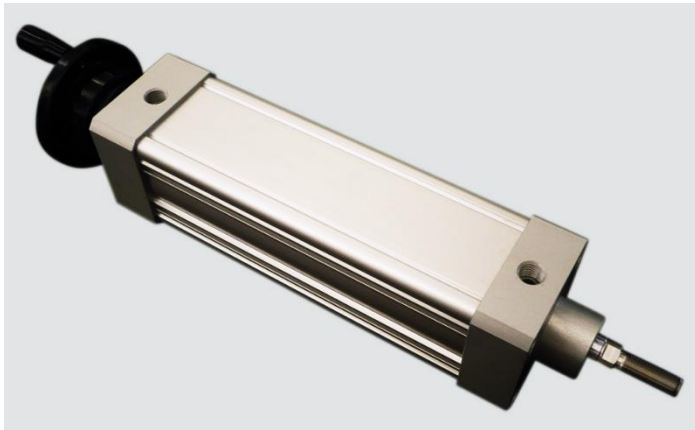
Cylinder \varnothing 100 mm. stroke 60 mm., single acting, exit of the piston rod by low pressure steam and return by force of gravity, piston rod, piston and tube in stainless steel AISI304, caps in aluminium, piston seal in energized PTFE with segment guide in carbo-graphite.



Special pneumatic cylinders/actuators.
Examples of projects realized.



Cylinders totally special, according Customer design



Cylinder with dimensions according to ISO15552 standards, \varnothing 80 mm. stroke 200 mm., with integrated system of adjustment of end of stroke and device to read position.



Special compact cylinder for thermo sealing machines, food packaging field, piston \varnothing 180mm. stroke 25 mm., double acting, front and rear caps in anticorodal aluminium chemical nickel plated, piston and piston rod in stainless steel AISI 304, tube in stainless steel AISI 304, FKM (Viton) seals for high temperature.



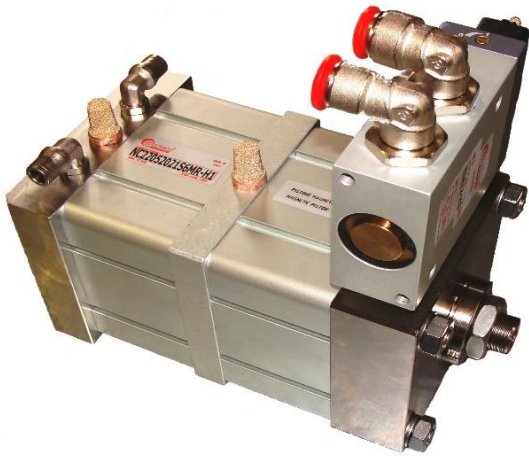
Special compact cylinder for thermo sealing machines, food packaging field, piston \varnothing 180 mm. stroke 30mm., double acting, front cap and barrel in anticorodal aluminium with hard anodization, piston and piston rod in aluminium with hard anodization, FKM (Viton) seals for high temperature.



Special pneumatic cylinders/actuators.
Examples of projects realized.



Cylinders totally special, according Customer design



Tandem compact cylinder, double thrust, \varnothing 100 mm. stroke 25 mm., double acting, magnetic piston, mechanical adjustment of the return stroke and with integrated control solenoid valve.

Tie-rod cylinder, double acting, \varnothing 200 mm. stroke 210 mm., caps in C45 nickel plated steel, tube in steel internally smoothed and chromium plated, externally protected by epoxy painting, piston rod diameter 32 mm. in C45 chromium plated steel, piston rod and piston seals in NBR (nitrilic rubber)..



Cylinder originated from the series CX according to ISO15552 standards, \varnothing 63 mm. stroke 125 mm., double acting, piston rod diameter 40 mm. in C45 chromium plated steel with terminal according customer design, profiled tube in anodized aluminium, integrated one way lock valve pneumatic actuated with ports G1/4".

Tie-rod cylinder, \varnothing 150 mm. stroke 3000 mm., double acting with high speed piston, caps in aluminium with increased air ports, tube in brass, tie-rods in steel, piston rod diameter 30 mm., in C45 chromium plated steel, non-rotating sistem of the piston rod by two bars, piston rod seals in poliurethane, guide bushing in P.T.F.E., adjustable pneumatic fine end stroke cushioning.

