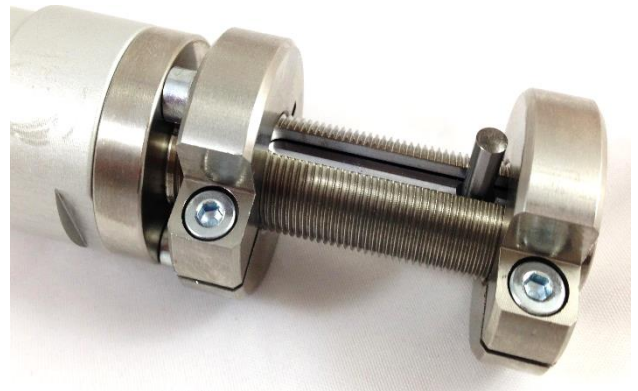




Special pneumatic cylinders/actuators.  
Examples of projects realized.



## Special cylinders obtained from standard models



ISO6432 cylinder  $\varnothing$  25 mm. with system of stroke adjustment by threaded nuts and private label with the Logo of the Customer.



ISO6432 cylinder  $\varnothing$  20 mm. with double stroke and front nose with extended thread, supplied complete with quick fittings.



Round cylinder with screwed caps "interchangeable" with the old CP model of Bonesi Ettore,  $\varnothing$  27 mm., stroke 80 mm., double acting, mounting by front flange.



Round cylinder with screwed caps "interchangeable" with the old model of Pneumatica Italiana,  $\varnothing$  40 mm., stroke 40 mm., single acting front spring, mounting by front threaded cap.



Special pneumatic cylinders/actuators.  
Examples of projects realized.



## Special cylinders obtained from standard models



Compact cylinder originated from CU series:  
- dimensions according UNITOP standards  
- Ø 63 mm., stroke 25 mm., double acting  
Special tandem version with three thrust stages, double ended piston rod in stainless steel AISI 303, increased to 20 mm. piston rod diameter, reinforced guide bushings.



Compact cylinder, Ø 50 mm, stroke 15 mm, double acting, double ended and hollow special piston rod, extended in one side with a calibrated hole Ø 8 mm, caps and tube in anodized aluminium.



Compact cylinder series CU Ø 32mm., version opposed tandem cylinders with piston rods Ø 16mm. with internal precise antirotation piston rod device.



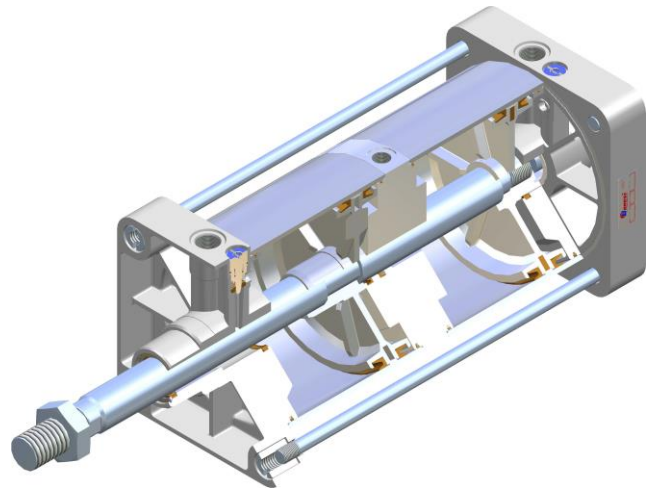
Special pneumatic cylinders/actuators.  
Examples of projects realized.



## Special cylinders obtained from standard models



Tie-rod compact cylinder, Ø 250mm, stroke 75 mm, without adjustable cushions, with steel tube internally hard chromium plated and externally epoxy painted, caps in die cast aluminium epoxy painted, piston rod and tie-rods in stainless steel AISI 304.



Cylinders series ISO15552 Ø 160 and 200 mm., tandem version with double thrust, tie-rod construction, with caps and tube in aluminium protected by epoxy painting, piston rod and tie-rods in stainless steel AISI 304.



Double acting cylinder series ISO15552, Ø 50mm., stroke 75mm., caps and tube in aluminium protected by epoxy painting, piston rod and screws in stainless steel AISI 304, with integrated internal spring for security guarantee.



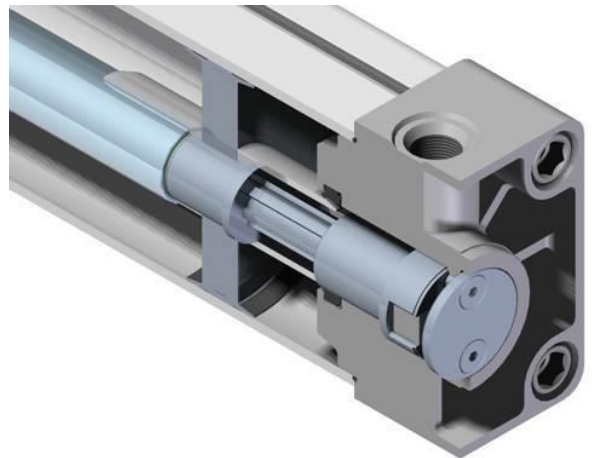
Special pneumatic cylinders/actuators.  
Examples of projects realized.



## Special cylinders obtained from standard models



Tie-rod CNOMO cylinder, Ø 200 mm., stroke 400 mm., tube in steel internally chromium plated and epoxy painting, caps in aluminium painted, special execution with piston seal for fast sliding, guide runner in carbo-graphite, used to balance masses in fast movement.



Cylinders ISO 1552 Ø 80, 100 and 125 mm., with special internal device for the anti-rotation of the piston rod.



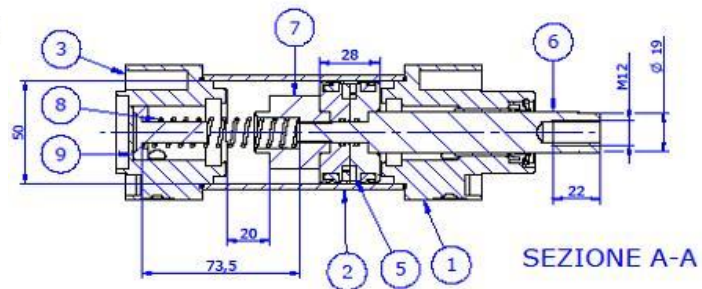
Cilinders ISO1552 Ø 32,40,50,63,80,100 mm., available for several strokes, with integrated mechanical device for locking the piston rod and intermediate adjustable hinge for oscillating fixing.



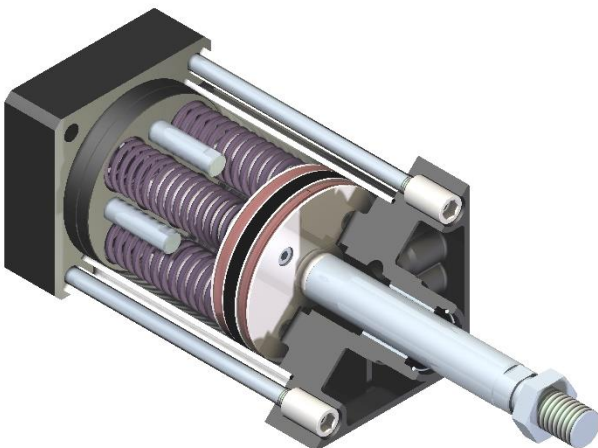
## Special cylinders obtained from standard models



Tie-rod cylinder,  $\varnothing$  63 mm., stroke 150 mm., tube in steel internally hard chromium plated and epoxy painting, special execution with piston seal for very high speed sliding, guide runner in carbo-graphite and special grease for high performances, for functioning in "positioning" linear actuators.



Tie-rod cylinder series ISO15552, working with compressed air up to 16 bars and high vacuum, single acting, without air the piston rod is out with springs integrated in the rear chamber, used for security functions in autoclaves with high vacuum.



Tie-rod cylinder,  $\varnothing$  125 mm., stroke 55 mm., single acting with piston rod out without air and integrated springs in the rear chamber, piston rod in stainless steel AISI 303 and piston seal in Viton.



Special pneumatic cylinders/actuators.  
Examples of projects realized.



## Special cylinders obtained from standard models



Cylinder with dimensions according CNOMO standards, special execution with double ended and hollow piston rod.

- Ø 63 mm., stroke 35 mm., double acting, caps in aluminium with epoxy painting with reinforced guide with bush in bronze, profiled tube in anodized aluminium, piston rod diameter 25 mm., with hole Ø 18 mm., magnetic piston and seals in nitril rubber (NBR).



Cylinder with dimensions according CNOMO standards, special execution with double ended and hollow piston rod.

- Ø 63 mm., stroke 35 mm., double acting, caps in aluminium machined from solid bar and anodized, profiled tube in anodized aluminium, piston rod diameter 25 mm., with hole Ø 18 mm., magnetic piston and seals in nitril rubber (NBR).



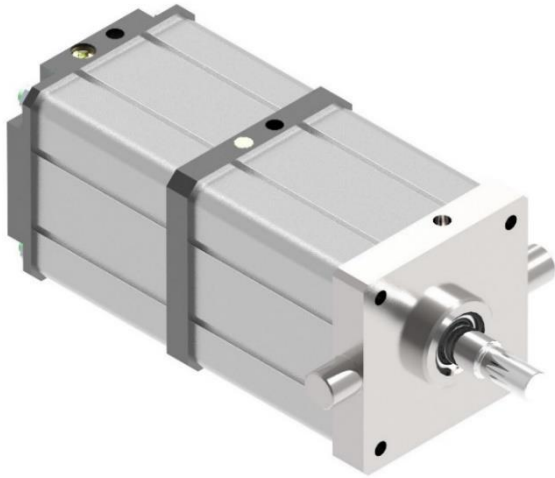
Cylinder originated from series CX according ISO standards, double acting, Ø 50 mm., stroke 90 mm., caps in aluminium machined from solid bar, profiled tube in anodized aluminium, piston rod diameter 20 mm. in chromium plated steel, piston and piston rod seals in PTFE loaded and energized by spring, guide band on the piston in bronze, suitable for functioning up to 300°C.



Special pneumatic cylinders/actuators.  
Examples of projects realized.



## Special cylinders obtained from standard models



Compact cylinder, tandem in thrust, caps in melting of aluminium, front cap in steel with integrated rotation pins, rear and intermediated caps in anodized aluminium, profiled tube in anodized aluminium, increased piston rod diameter 32 mm., adjustable cushion only on return stroke.

Tie-rod cylinder ISO15552, Ø 250 mm., stroke 400 mm., tube in anodized aluminium, caps in melting of aluminium, special execution with piston seal of fast sliding, guide band in carbographite and special grease with high performances, ready for lubrication through threaded ports on the rear cap, without adjustable cushions.



Complete working unit, composed by:

- cylinder ISO 15552, Ø100mm., stroke 300 mm.
- mounting with front fork and female rear hinge
- solenoid valve 5 ways single stable position 1/4" G ports, poppet construction
- quick exhaust valve for the return stroke of the piston